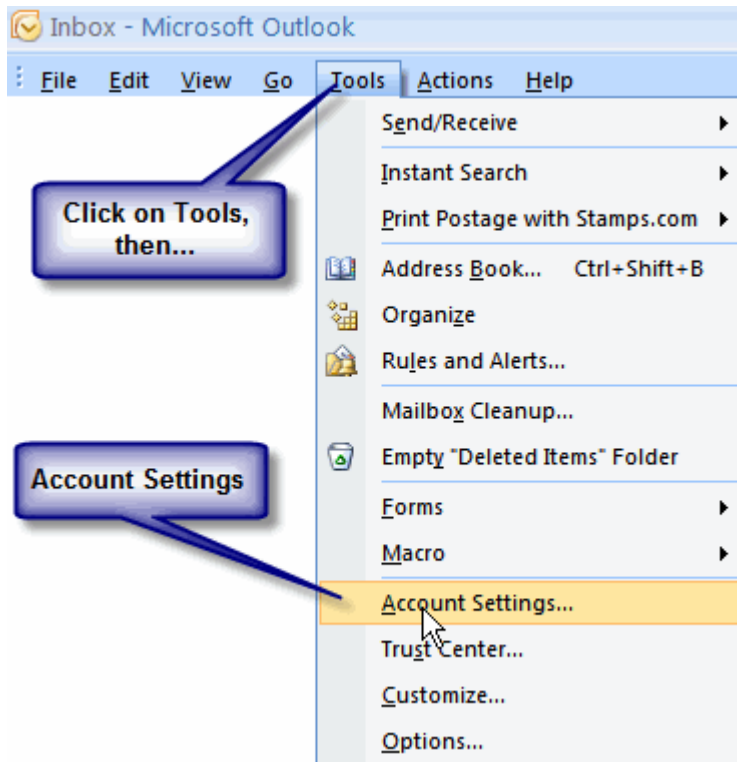


---

# MAKING YOUR EMAIL MORE SECURE WITH SMTP AUTHENTICATION – OUTLOOK 2007



**Account Settings**

**E-mail Accounts**

... select an account and change its settings.

**First, Select the Correct Account (if you have more than one)**

E-mail | Data Files | Feeds | SharePoint Lists | Internet Calendars | Published Calendars | Address Books

New... Repair... Change... Set as Default Remove ↑ ↓

Name	Type
wildwoodinteractive.com	POP/SMTP (send from this account by default)
wildwoodlab.com	POP/SMTP
wildwoodlab.com (1)	POP/SMTP

**Then Select "Change"**

Selected e-mail account delivers new e-mail messages to the following location:

Change Folder **Personal Folders\Inbox**  
in data file C:\Documents and Settings\West\...\Microsoft\Outlook\outlook.pst

Close

## Change E-mail Account



### Internet E-mail Settings

Each of these settings are required to get your e-mail account working.



#### User Information

Your Name:   
E-mail Address:

#### Server Information

Account Type:   
Incoming mail server:   
Outgoing mail server (SMTP):

#### Logon Information

User Name:   
Password:

Remember password

Require logon using Secure Password Authentication (SPA)

#### Test Account Settings

After filling out the information on this screen, we recommend you test your account by clicking the button below. (Requires network connection)

Select "More Settings"

